

Overview

KS2 Attainment 2018 · Actual results

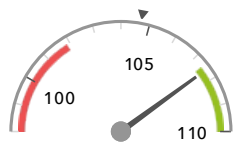
28 pupils

Average Scaled Score (Re, Ma)

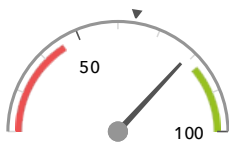
% Expected standard+ (Re, Wr, Ma)

107.6+

79%



Significantly above the national average (104.7) ◀



In line with the national average (64%) ◀

KS2 Progress 2018 · Value Added

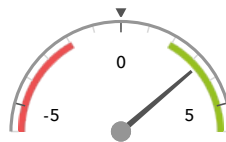
28 matched pupils

Average Scaled Score (Re, Ma)

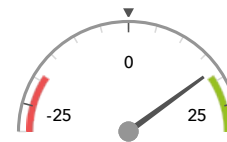
% Expected standard+ (Re, Wr, Ma)

+3.3+

+18%



Significantly above the national average (0) ◀



In line with the national average (0%) ◀

KS2 higher and lower performing pupil groups 2018

	Higher performing	Lower performing
Overall achievement pupil progress	No SEN (24)+ Not FSM (ever) (20)+ Spring Term (12)+	
KS2 reading achievement pupil progress	No SEN (24)+ Not FSM (ever) (20)+ Middle attainers (17)+	
KS2 writing achievement pupil progress		FSM (ever) (8) ↓ Higher attainers (7) ↓ FSM (in last 6 years) (7)
KS2 mathematics achievement pupil progress	No SEN (24)+ Spring Term (12)+ Not FSM (ever) (20)+	
KS2 grammar, punctuation & spelling achievement pupil progress	Spring Term (12)+ No SEN (24)+ Not FSM (ever) (20)+	FSM (ever) (8) FSM (in last 6 years) (7)